

# Cape Cod National Seashore 2012 Annual Winter Film Festival

National Park Service  
U.S. Department of the Interior



## *“Our Changing World... Real and Imagined”*

Sundays at 1:30 PM, FREE, at Salt Pond Visitor Center, Eastham.

*Sponsored by Friends of the Cape Cod National Seashore*

Touching on topics as diverse as the resources and stories of Cape Cod, this film series covers whaling history, marooned shipwreck victims, the Wampanoag People, and marine conservation.

### **January 22 “Into The Deep”**

This documentary explores the history of America’s whaling industry, and alerts modern-day viewers to the dangers of exploiting our natural resources. (120 minutes)

### **January 29 “Swiss Family Robinson”**

Shipwrecked on a wildlife-inhabited island, the Robinson family is marooned. In true pioneer spirit, they quickly make themselves at home. A rousing adventure from Walt Disney suitable for the whole family. (126 minutes)

### **February 5 “We Shall Remain”**

Native American history is told through indigenous eyes in *Episode 1: After the Mayflower*. This PBS American Experience 5-part series spans 300 years of adversity, resilience, and self-determination. (77 minutes)

### **February 12 “Robinson Crusoe”**

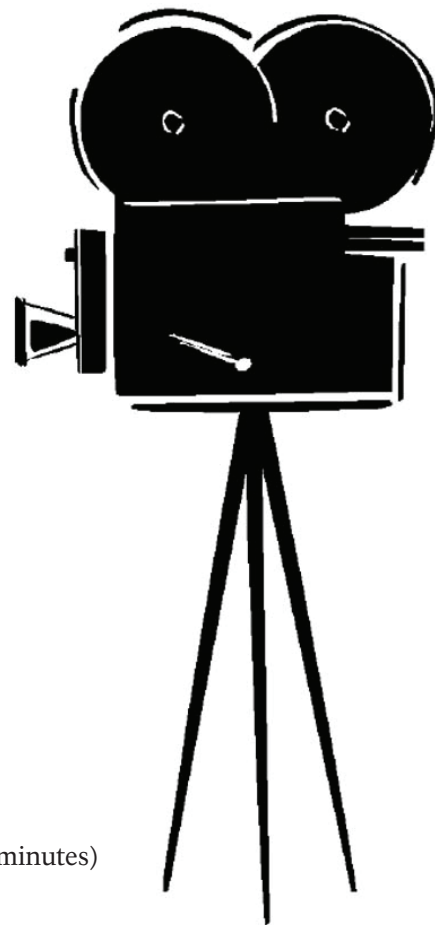
Daniel Defoe’s classic comes to life. Robinson Crusoe survives a shipwreck in the 1650s and washes up on a remote island eventually befriending a savage he names “Friday.” (90 minutes)

### **February 19 “Wall-E”**

In a futuristic world, human beings have destroyed Earth and evacuated the planet, leaving the cleanup to an army of robots including dutiful Wall-E. Oscar-winning Pixar tale with a sci-fi twist. (98 minutes)

### **February 26 “The Sea Behind the Dunes” and “Adrift on the Gulf Stream”**

NOVA films amplify the world around us and help to illustrate and illuminate the extreme experiences in our coastal environment. (113 minutes, with intermission)



Salt Pond Visitor Center, Route 6 at Nauset Road, Eastham ♿

508 - 255 - 3421 Ext. 0

[www.nps.gov/caco](http://www.nps.gov/caco)